


GEN-Y HITCH

®

PROUDLY
MADE IN AMERICA



HOME OF
TORSION FLEX
TECHNOLOGY

TABLE OF CONTENTS

MEGA-DUTY RECEIVER HITCHES

- 4** 300 SERIES - 2" SHANK - 10,000 LB. TOWING
- 5** 500 SERIES - 2" SHANK - 16,000 LB. TOWING
- 6** 600 SERIES - 2½" SHANK - 21,000 LB. TOWING
- 6** 1600 SERIES - 2½" SHANK - 32,000 LB. TOWING
- 6** 1700 SERIES - 3" SHANK - 32,000 LB. TOWING

MEGA-DUTY OFFSET RECEIVER HITCHES

- 7** 200 SERIES - 2" SHANK - 16,000 LB. TOWING
- 7** 400 SERIES - 2" SHANK - 10,000 LB. TOWING
- 8** 900 SERIES - 2½" SHANK - 21,000 LB. TOWING
- 8** 1900 SERIES - 2½" SHANK - 32,000 LB. TOWING
- 8** 2000 SERIES - 3" SHANK - 32,000 LB. TOWING

MEGA-DUTY BOLT-ON/WELD-ON HITCHES

- 9** 100 SERIES - 16,000 LB. TOWING
- 9** 700 SERIES - 21,000 LB. TOWING
- 9** 3000 SERIES - 32,000 LB. TOWING

BOSS TORSION HITCHES

- 10** 1000 SERIES - 2" SHANK - 10,000 LB. TOWING
- 11** 1200 SERIES - 2" SHANK - 16,000 LB. TOWING
- 11** 1100 SERIES - 2½" SHANK - 16,000 LB. TOWING
- 12** 1300 SERIES - 2½" SHANK - 21,000 LB. TOWING
- 12** 1800 SERIES - 3" SHANK - 21,000 LB. TOWING

BOSS DROP DOWN TORSION HITCHES

- 13** 1400 SERIES - 2" SHANK - 16,000 LB. TOWING
- 13** 1500 SERIES - 2½" SHANK - 21,000 LB. TOWING

TRAVELLER FRAME MOUNT TORSION HITCHES

- 14** 6000 SERIES - 2½" SHANK - 21,000 LB. TOWING
- 14** 6000 SERIES - 2½" SHANK - 32,000 LB. TOWING

GLYDER LIGHTWEIGHT TORSION HITCH

- 15** 12000 SERIES - 2" SHANK - 7,000 LB. TOWING

SPARTAN GOOSENECK TORSION COUPLER

- 18** 7000 SERIES - 25,000 LB. TOWING
- 18** 7000 SERIES - 30,000 LB. TOWING

PEGASUS GOOSENECK TORSION COUPLER

- 19** 7000 SERIES - 25,000 LB. TOWING

CONTRACTOR CHANNEL MOUNT COUPLER

- 20** 10000 SERIES - 16,000 LB. & 21,000 LB. TOWING

VICTORY LANE FLAT MOUNT COUPLER

- 21** 10000 SERIES - 21,000 & 30,000 LB. TOWING

EXECUTIVE FIFTH WHEEL KING PIN

- 22** 8000 SERIES - 18,000 LB. TOWING
- 22** 8000 SERIES - 30,000 LB. TOWING

EXECUTIVE FIFTH TO GOOSE

- 23** 8000 SERIES - 18,000 LB. TOWING
- 23** 8000 SERIES - 30,000 LB. TOWING

TABLE OF CONTENTS

ALUMINUM RAMPS

24 ALUMINUM RAMPS

STABILIZER KIT

25 STABILIZER KITS

WEIGHT DISTRIBUTION & LOCKS

26 GOOSENECK COUPLER LOCK

26 WEIGHT DISTRIBUTION SHANK

26 SWAY CONTROL HEAD

PARTS & ACCESSORIES

27 HITCH STEPS

28 STAND-ALONE VERSA-BALL MOUNTS

28 REPLACEMENT BALL MOUNTS

29 SINGLE BALL MOUNTS

29 PINTLE LOCKS

30 REDUCER SLEEVES

30 WELD-ON RECEIVER TUBES

30 PINTLE PLATE

30 CLEVIS

31 MISCELLANEOUS

31 ANTI-SLACK / HITCH TIGHTENER

32 HITCH PINS

33 BOLT LOCKS

34 GEN-Y SWAG

COMPANY OVERVIEW

GEN-Y HITCH offers a wide range of towing products, many based on the patented TORSION-FLEX technology which has taken the towing market by storm. Manufactured in the USA, using American steel and Amish craftsmanship, GEN-Y HITCH products are built extremely tough, using heavy duty materials that will last a lifetime. GEN-Y's patented TORSION-FLEX technology eliminates up to 90% of the inertia between the truck and trailer. Not only does this result in the smoothest ride in the industry, but it also increases fuel mileage of the tow vehicle, as well as decreases tire wear.

GEN-Y product brands include the popular MEGA-DUTY adjustable drop hitch for trucks; the BOSS torsion hitch for trucks; the VICTORY LANE torsion hitch for race trailers; the CONTRACTOR torsion hitch for heavy equipment trailers; the SPARTAN gooseneck torsion for heavy duty trailers; the PEGASUS gooseneck torsion for horse trailers; the TRAVELLER chassis mount torsion for motorhomes and semis; the EXECUTIVE torsion hitch for fifth wheel RV's; and the GLYDER torsion hitch for light weight trailers.

Visit www.genyhitch.com for more information.



NOTE: PRICES, MODELS AND SPECIFICATIONS LISTED IN THIS INFORMATIVE CATALOGUE ARE SUBJECT TO CHANGE WITHOUT NOTICE OR OBLIGATION TO GEN-Y HITCHES. INFORMATION LISTED WAS TYPICAL AS OF THE PRINTING DATE OF THIS INFORMATIVE BROCHURE, BUT AS GEN-Y HITCH IS ALWAYS STRIVING FOR CONTINUOUS PRODUCT IMPROVEMENT, CHANGES OR IMPROVEMENTS HAPPEN IN A REAL TIME BASIS. FOR THE LATEST PRODUCT SPECIFICATIONS OR INFORMATION, SEE YOUR NEAREST GEN-Y DEALER OR CONTACT GEN-Y HITCH DIRECTLY.

PATENTED DROP HITCHES 300 SERIES



MEGA-DUTY

300 SERIES

CLASS IV | SHANK 2" | TOWING 10,000 LB. | TONGUE WEIGHT 1,500 LB.



Package GH-304 shown.

MODEL NO.	RAISE/DROP	PRICE
GH-303	5"	\$179.99
GH-304	7½"	\$189.99
GH-305	10"	\$209.99
GH-306	12½"	\$239.99
GH-307	15"	\$259.99
GH-308	17½"	\$279.99
GH-309	20"	\$319.99
GH-3010	22½"	\$339.99

Hitch Only, two pins & bolts included.



Package GH-314 shown.

MODEL NO.	RAISE/DROP	PRICE
GH-313	5"	\$229.99
GH-314	7½"	\$239.99
GH-315	10"	\$259.99
GH-316	12½"	\$289.99
GH-317	15"	\$309.99
GH-318	17½"	\$339.99
GH-319	20"	\$369.99
GH-3110	22½"	\$389.99

Hitch with Versa-Ball 2⁵/₁₆" & 2", two pins and bolts.



Package GH-324 shown.

MODEL NO.	RAISE/DROP	PRICE
GH-323	5"	\$259.99
GH-324	7½"	\$269.99
GH-325	10"	\$289.99
GH-326	12½"	\$309.99
GH-327	15"	\$339.99
GH-328	17½"	\$369.99
GH-329	20"	\$399.99
GH-3210	22½"	\$409.99

Hitch with Versa-Ball 2⁵/₁₆" & 2", pintle lock, two pins and bolts.



PATENTED DROP HITCHES 500 SERIES



CLASS V | SHANK 2" | TOWING 16,000 LB. | TONGUE WEIGHT 2,000 LB.

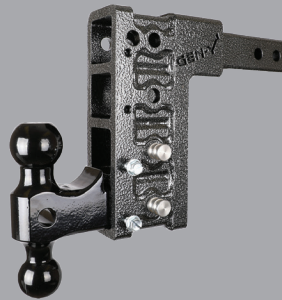
*Note: Sold with stabilizer system. See page 25.



Package GH-504 shown.

MODEL NO.	RAISE/DROP	PRICE
GH-503	5"	\$189.99
GH-504	7½"	\$199.99
GH-505	10"	\$219.99
GH-506	12½"	\$249.99
GH-507*	15"	\$489.99
GH-508*	17½"	\$509.99

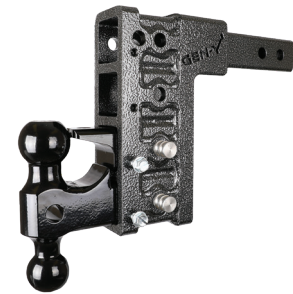
Hitch Only, two pins and bolts included.



Package GH-514 shown.

MODEL NO.	RAISE/DROP	PRICE
GH-513	5"	\$259.99
GH-514	7½"	\$269.99
GH-515	10"	\$289.99
GH-516	12½"	\$319.99
GH-517*	15"	\$569.99
GH-518*	17½"	\$589.99

Hitch with Versa-Ball 2⁵/₁₆" & 2", two pins and bolts.



Package GH-524 shown.

MODEL NO.	RAISE/DROP	PRICE
GH-523	5"	\$289.99
GH-524	7½"	\$299.99
GH-525	10"	\$319.99
GH-526	12½"	\$349.99
GH-527*	15"	\$599.99
GH-528*	17½"	\$609.99

Hitch with Versa-Ball 2⁵/₁₆" & 2", pintle lock, two pins and bolts.

PATENTED DROP HITCHES



MEGA-DUTY
600 SERIES

MEGA-DUTY
1600 SERIES

MEGA-DUTY
1700 SERIES

- **CLASS V**
- **SHANK: 2 1/2"**
- **TOWING: 21,000 LB.**
- **TONGUE WEIGHT: 3,000 LB.**

- **CLASS V**
- **SHANK: 2 1/2"**
- **TOWING: 32,000 LB.**
- **TONGUE WEIGHT: 3,500 LB.**

- **CLASS V**
- **SHANK: 3"**
- **TOWING: 32,000 LB.**
- **TONGUE WEIGHT: 3,500 LB.**

*Note: Sold with stabilizer system. See page 25.



Package GH-624 shown.

MODEL NO.	RAISE/DROP	PRICE
GH-623	6"	\$389.99
GH-624	9"	\$399.99
GH-625	12"	\$449.99
GH-626*	15"	\$679.99
GH-627*	18"	\$699.99

Hitch with Versa-Ball 2 5/16" & 2", pintle lock, two pins and bolts.



Package GH-1624 shown.

MODEL NO.	RAISE/DROP	PRICE
GH-1623	6"	\$419.99
GH-1624	9"	\$429.99
GH-1625	12"	\$459.99

Hitch with Versa-Ball 2 5/16" & 2", pintle lock, two pins and bolts.



Package GH-1724 shown.

MODEL NO.	RAISE/DROP	PRICE
GH-1723	6"	\$439.99
GH-1724	9"	\$449.99
GH-1725	12"	\$479.99

Hitch with Versa-Ball 2 5/16" & 2", pintle lock, two pins and bolts.

CLASS V | SHANK 2" | TOWING 16,000 LB. | TONGUE WEIGHT 2,000 LB.
200 SERIES


Package GH-204 shown.

MODEL NO.	RAISE/DROP	PRICE
GH-204	2½" or 5"	\$199.99
GH-206	5" or 7½"	\$249.99

Hitch Only, two pins and bolts included.



Package GH-214 shown.

MODEL NO.	RAISE/DROP	PRICE
GH-214	2½" or 5"	\$269.99
GH-216	5" or 7½"	\$319.99

Hitch with Versa-Ball 2⅝" & 2", two pins and bolts.



Package GH-224 shown.

MODEL NO.	RAISE/DROP	PRICE
GH-224	2½" or 5"	\$299.99
GH-226	5" or 7½"	\$349.99

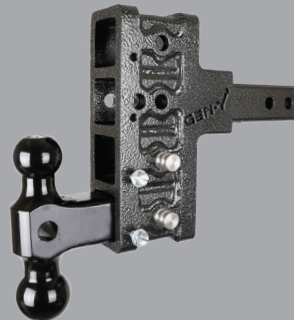
Hitch with Versa-Ball 2⅝" & 2", pintle lock, two pins and bolts.

CLASS IV | SHANK 2" | TOWING 10,000 LB. | TONGUE WEIGHT 1,500 LB.
400 SERIES


Package GH-404 shown.

MODEL NO.	RAISE/DROP	PRICE
GH-404	2½" or 5"	\$189.99
GH-406	5" or 7½"	\$239.99

Hitch Only, two pins and bolts included.



Package GH-414 shown.

MODEL NO.	RAISE/DROP	PRICE
GH-414	2½" or 5"	\$239.99
GH-416	5" or 7½"	\$289.99

Hitch with Versa-Ball 2⅝" & 2", two pins and bolts.



Package GH-424 shown.

MODEL NO.	RAISE/DROP	PRICE
GH-424	2½" or 5"	\$269.99
GH-426	5" or 7½"	\$319.99

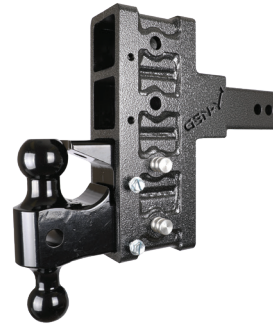
Hitch with Versa-Ball 2⅝" & 2", pintle lock, two pins and bolts.

PATENTED OFFSET DROP HITCHES

900 SERIES



- **CLASS V**
- **SHANK: 2 1/2"**
- **TOWING: 21,000 LB.**
- **TONGUE WEIGHT: 3,000 LB.**



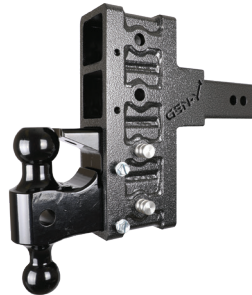
Package GH-924 shown.

MODEL NO.	RAISE/DROP	PRICE
GH-924	3" or 6"	\$439.99
GH-925	3" or 9"	\$469.99
GH-926	3" or 12"	\$499.99

Hitch with Versa-Ball 2⁵/₁₆" & 2", pintle lock, two pins and bolts.



- **CLASS V**
- **SHANK: 2 1/2"**
- **TOWING: 32,000 LB.**
- **TONGUE WEIGHT: 3,500 LB.**



Package GH-1924 shown.

MODEL NO.	RAISE/DROP	PRICE
GH-1924	3" or 6"	\$449.99
GH-1925	3" or 9"	\$479.99
GH-1926	3" or 12"	\$509.99

Hitch with Versa-Ball 2⁵/₁₆" & 2", pintle lock, two pins and bolts.



- **CLASS V**
- **SHANK: 3"**
- **TOWING: 32,000 LB.**
- **TONGUE WEIGHT: 3,500 LB.**



Package GH-2024 shown.

MODEL NO.	RAISE/DROP	PRICE
GH-2024	6"	\$489.99

Hitch with Versa-Ball 2⁵/₁₆" & 2", pintle lock, two pins and bolts.

CLASS V | TOWING 16,000 LB. | TONGUE WEIGHT 2,000 LB.



Package GH-102 shown.

MODEL NO.	RAISE/DROP	PRICE
GH-102	2½"	\$159.99
GH-104	7½"	\$239.99

Hitch Only, and two pins.



Package GH-112 shown.

MODEL NO.	RAISE/DROP	PRICE
GH-112	2½"	\$209.99
GH-114	7½"	\$289.99

Hitch with Versa-Ball 2⁵/₁₆" & 2", and two pins.



Package GH-122 shown.

MODEL NO.	RAISE/DROP	PRICE
GH-122	2½"	\$239.99
GH-124	7½"	\$319.99

Hitch with Versa-Ball 2⁵/₁₆" & 2", pintle lock, and two pins.

- **CLASS V**
- **TOWING: 21,000 LB.**
- **TONGUE WEIGHT: 3,000 LB.**



Package GH-724 shown.

MODEL NO.	RAISE/DROP	PRICE
GH-724	9"	\$419.99

Hitch with Versa-Ball 2⁵/₁₆" & 2", pintle lock, and two pins.

- **CLASS V**
- **TOWING: 32,000 LB.**
- **TONGUE WEIGHT: 3,500 LB.**



Package GH-3024 shown.

MODEL NO.	RAISE/DROP	PRICE
GH-3024	9"	\$479.99

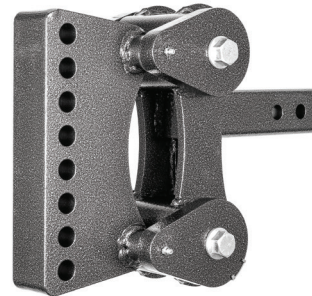
Hitch with Versa-Ball 2⁵/₁₆" & 2", pintle lock, and two pins.

PATENTED TORSION HITCHES



THE BOSS TORSION FLEX

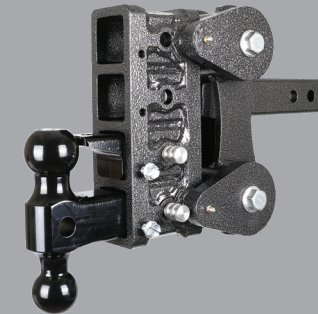
- **CLASS IV**
- **SHANK: 2"**
- **TOWING: 10,000 LB.**
- **TONGUE WEIGHT: 1,100 LB.**
- **OPTIMAL TONGUE WEIGHT: 400-1,100 LB**



Package GH-1002 shown.

MODEL NO.	RAISE/DROP	PRICE
GH-1002	6½"	\$579.99
GH-1003	9½"	\$599.99

Weight Distribution system not included.



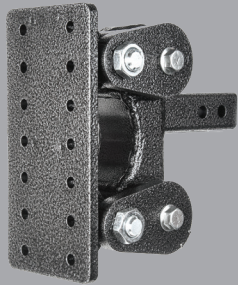
Package GH-1024 shown.

MODEL NO.	RAISE/DROP	PRICE
GH-1024	2½" or 5"	\$589.99
GH-1025	2½" or 7½"	\$609.99
GH-1026	2½" or 10"	\$629.99

Hitch with Versa-Ball 2⁵/₁₆" & 2", pintle lock, two pins and bolts.

CLASS V | SHANK 2" | TOWING 16,000 LB. | TONGUE WEIGHT 1,700 LB.

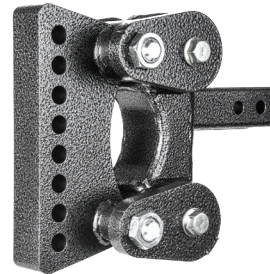
OPTIMAL TONGUE WEIGHT: 1,000-1,700 LB



Package GH-1201 shown.

MODEL NO.	RAISE/DROP	PRICE
GH-1201	5 1/2"	\$469.99

Hitch and bolt-on pintle plate. Pintle not included.



Package GH-1202 shown.

MODEL NO.	RAISE/DROP	PRICE
GH-1202	6 1/2"	\$629.99
GH-1203	9 1/2"	\$649.99

Weight Distribution system not included.



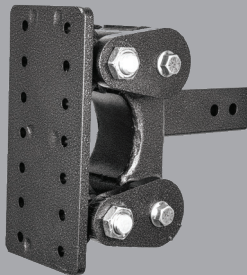
Package GH-1224 shown.

MODEL NO.	RAISE/DROP	PRICE
GH-1224	5"	\$639.99
GH-1225	7 1/2"	\$659.99
GH-1226	10"	\$689.99

Hitch with Versa-Ball 2 5/16" & 2", pintle lock, two pins and bolts.

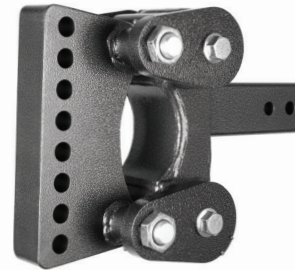
CLASS V | SHANK 2 1/2" | TOWING 16,000 LB. | TONGUE WEIGHT 1,700

OPTIMAL TONGUE WEIGHT: 1,000-1,700 LB



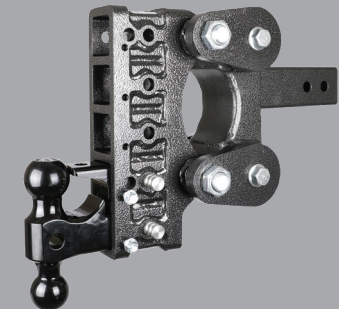
Package GH-1101 shown.

MODEL NO.	RAISE/DROP	PRICE
GH-1101	5 1/2"	\$519.99



Package GH-1102 shown.

MODEL NO.	RAISE/DROP	PRICE
GH-1102	6 1/2"	\$679.99
GH-1103	9 1/2"	\$699.99

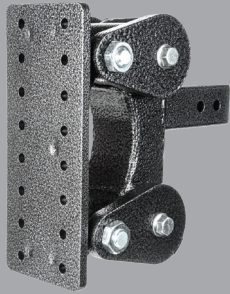


Package GH-1125 shown.

MODEL NO.	RAISE/DROP	PRICE
GH-1124	5"	\$689.99
GH-1125	7 1/2"	\$709.99
GH-1126	10"	\$729.99

CLASS V | SHANK 2½" | TOWING 21,000 LB. | TONGUE WEIGHT 2,400 LB.

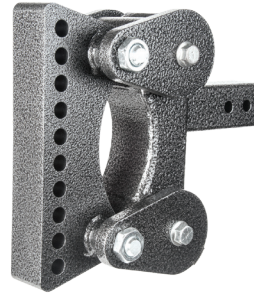
OPTIMAL TONGUE WEIGHT: 1,500-2,400 LB



Package GH-1301 shown.

MODEL NO.	RAISE/DROP	PRICE
GH-1301	6½"	\$599.99

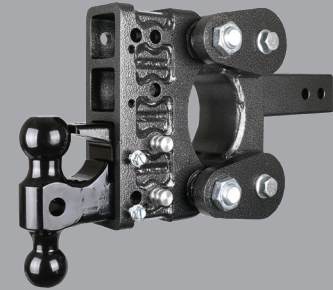
Hitch and bolt-on pintle plate. Pintle not included.



Package GH-1302 shown.

MODEL NO.	RAISE/DROP	PRICE
GH-1302	7"	\$749.99
GH-1303	11"	\$769.99

Weight Distribution system not included.



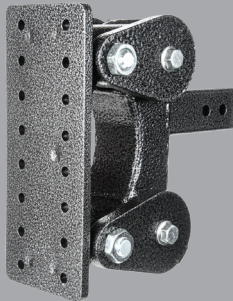
Package GH-1324 shown.

MODEL NO.	RAISE/DROP	PRICE
GH-1324	6"	\$799.99
GH-1325	9"	\$829.99
GH-1326	12"	\$859.99

Hitch with Versa-Ball 2⅝" & 2", pintle lock, two pins and bolts.

CLASS V | SHANK 3" | TOWING 21,000 LB. | TONGUE WEIGHT 2,400 LB

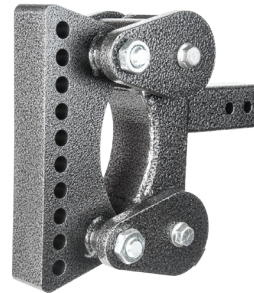
OPTIMAL TONGUE WEIGHT: 1,500-2,400 LB



Package GH-1801 shown.

MODEL NO.	RAISE/DROP	PRICE
GH-1801	6½"	\$699.99

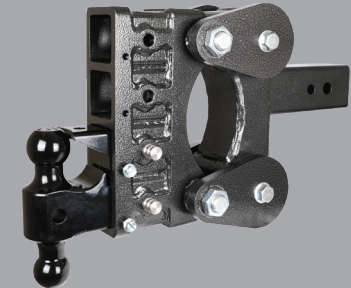
Hitch and bolt-on pintle plate. Pintle not included.



Package GH-1802 shown.

MODEL NO.	RAISE/DROP	PRICE
GH-1802	7"	\$799.99
GH-1803	11"	\$849.99

Weight Distribution system not included.



Package GH-1824 shown.

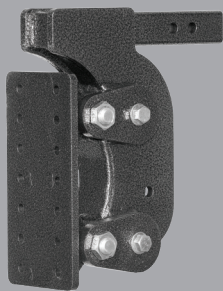
MODEL NO.	RAISE/DROP	PRICE
GH-1824	6"	\$849.99
GH-1825	9"	\$879.99
GH-1826	12"	\$919.99

Hitch with Versa-Ball 2⅝" & 2", pintle lock and two pins.

CLASS V | SHANK 2" | TOWING 16,000 LB. | TONGUE WEIGHT 1,700 LB

*Note: Sold with stabilizer system. See page 25.

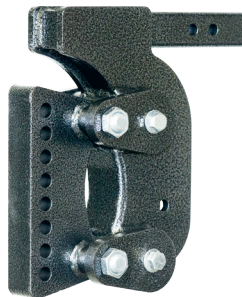
OPTIMAL TONGUE WEIGHT: 1,000-1,700 LB



Package GH-1401 shown.

MODEL NO.	DROP	PRICE
GH-1401*	12½"	\$919.99

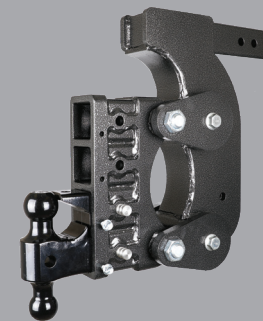
Hitch and bolt-on pintle plate. Pintle not included.



Package GH-1402 shown.

MODEL NO.	DROP	PRICE
GH-1402*	12½"	\$939.99
GH-1403*	16½"	\$959.99

Weight Distribution system not included.



Package GH-1424 shown.

MODEL NO.	DROP	PRICE
GH-1424*	12½"	\$939.99
GH-1425*	15"	\$959.99
GH-1426*	17½"	\$989.99

Hitch with Versa-Ball 2⁵/₁₆" & 2", pintle lock, two pins and bolts.

CLASS V | SHANK 2½" | TOWING 21,000 LB. | TONGUE WEIGHT 2,400 LB

*Note: Sold with stabilizer system. See page 25.

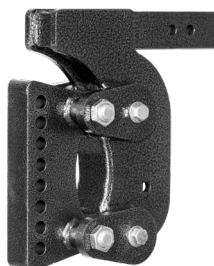
OPTIMAL TONGUE WEIGHT: 1,500-2,400 LB



Package GH-1501 shown.

MODEL NO.	RAISE/DROP	PRICE
GH-1501*	15"	\$1,119.99

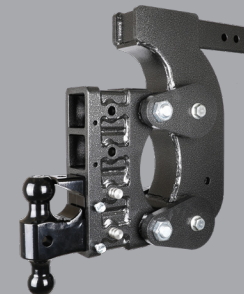
Hitch and bolt-on pintle plate. Pintle not included.



Package GH-1502 shown.

MODEL NO.	RAISE/DROP	PRICE
GH-1502*	15"	\$1,139.99
GH-1503*	22¾"	\$1,159.99

Weight Distribution system not included.



Package GH-1524 shown.

MODEL NO.	RAISE/DROP	PRICE
GH-1524*	15"	\$1,139.99
GH-1525*	18"	\$1,169.99
GH-1526*	21"	\$1,199.99

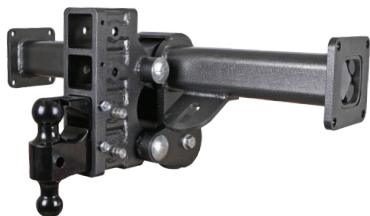
Hitch with Versa-Ball 2⁵/₁₆" & 2", pintle lock, two pins and bolts.

PATENTED TORSION HITCHES 6000 SERIES



TRAVELLER TORSION FLEX

- **CLASS V**
- **SHANK: 2 1/2"**
- **TOWING: 21,000 LB.**
- **TONGUE WEIGHT: 2,400 LB.**
- **OPTIMAL TONGUE WEIGHT: 1,500-2,400 LB**



Torsion hitch, Versa-Ball 2 5/16" & 2", pintle lock, two pins and bolts.

MODEL NO.	RAISE/DROP	PRICE
GH-6023	6"	\$1,459.99
GH-6024	9"	\$1,479.99
GH-6025	12"	\$1,499.99

Brackets available for all models for \$99.99.

Available for specific vehicles: Minimal drilling involved.

Ford - F250 - F450

Dodge - 2500 - 4500

Chevrolet - 2500 - 4500

Also can be custom fit for additional applications including motorhomes.

- **CLASS V**
- **SHANK: 2 1/2"**
- **TOWING: 32,000 LB.**
- **TONGUE WEIGHT: 3,000 LB.**
- **OPTIMAL TONGUE WEIGHT: 2,000-3,000 LB**



Torsion hitch, Versa-Ball 2 5/16" & 2", pintle lock, two pins and bolts.

MODEL NO.	RAISE/DROP	PRICE
GH-6624-1	6"	\$1,899.99



- CLASS IV
- SHANK: 2"
- TOWING: 7,000 LB.
- TONGUE WEIGHT: 700 LB.
- OPTIMAL TONGUE WEIGHT: 200-700 LB

ADDITIONAL ATTACHMENTS

NEW



Package GH-12001 shown.

MODEL NO.	RAISE/DROP	PRICE
GH-12001	2"	\$194.00
GH-12005	4½"	\$274.00

MODEL NO.	DESCRIPTION	PRICE
GH-12010	4½" drop/raise attachment	\$99.99
GH-12011	Weight Distribution	\$99.99
GH-12012	2" Single Ball	\$12.99
GH-12013	2¾" Single Ball	\$14.99
GH-12014	1¾" Single Ball	\$9.99



GOOSENECK COUPLERS





PATENTED GOOSENECK TORSION COUPLERS 7000 SERIES

SPARTAN TORSION FLEX

TOWING 25,000 LB. | TONGUE WEIGHT: 3,500 LB.

OPTIMAL TONGUE WEIGHT: 2,000-3,500 LB



Package GH-7001 shown.

MODEL NO.	PACKAGE INCLUDES	PRICE
GH-7001	4" Round (For Recessed Ball)	\$899.99
GH-7002	4" Round (Standard)	\$899.99
GH-7011	4" Square (For Recessed Ball)	\$899.99
GH-7012	4" Square (Standard)	\$899.99

TOWING 25,000 LB. | TONGUE WEIGHT 4,500 LB.

OPTIMAL TONGUE WEIGHT: 3,000-4,500 LB



Package GH-7041 shown.

MODEL NO.	PACKAGE INCLUDES	PRICE
GH-7041	4" Round (For Recessed Ball)	\$899.99
GH-7042	4" Round (Standard)	\$899.99
GH-7051	4" Square (For Recessed Ball)	\$899.99
GH-7052	4" Square (Standard)	\$899.99

TOWING 25,000 LB. | TONGUE WEIGHT 5,500 LB.

OPTIMAL TONGUE WEIGHT: 4,000-5,500 LB



Package GH-7061 shown.

MODEL NO.	PACKAGE INCLUDES	PRICE
GH-7061	4" Round (For Recessed Ball)	\$999.99
GH-7062	4" Round (Standard)	\$999.99
GH-7071	4" Square (For Recessed Ball)	\$999.99
GH-7072	4" Square (Standard)	\$999.99

TOWING 30,000 LB. | TONGUE WEIGHT 7,000 LB.

OPTIMAL TONGUE WEIGHT: 5,500-7,000 LB



Package GH-7081 shown.

MODEL NO.	PACKAGE INCLUDES	PRICE
GH-7081	4" Round (For Recessed Ball)	\$1,049.99
GH-7082	4" Round (Standard)	\$1,049.99
GH-7085	4" Round (For 3" Ball)	\$1,099.99
GH-7091	4" Square (For Recessed Ball)	\$1,049.99
GH-7092	4" Square (Standard)	\$1,049.99
GH-7095	4" Square (For 3" Ball)	\$1,099.99



TOWING 25,000 LB. | TONGUE WEIGHT: 3,500 LB.
 OPTIMAL TONGUE WEIGHT: 2,000-3,500 LB

TOWING 25,000 LB. | TONGUE WEIGHT 4,500 LB.
 OPTIMAL TONGUE WEIGHT: 3,000-4,500 LB

NEW



Package GH-7006 shown.

MODEL NO.	PACKAGE INCLUDES	EXTENSION	PRICE
GH-7006	4" Round (Standard)	11"	\$899.99
GH-7007	4" Round (For Recessed Ball)	11"	\$899.99

NEW



Package GH-7046 shown.

MODEL NO.	PACKAGE INCLUDES	EXTENSION	PRICE
GH-7046	4" Round (Standard)	11"	\$999.99
GH-7047	4" Round (For Recessed Ball)	11"	\$999.99

PATENTED CHANNEL MOUNT TORSION COUPLER 10000 SERIES



- TOWING: 16,000 LB.
- TONGUE WEIGHT: 1,700 LB.
- OPTIMAL TONGUE WEIGHT: 1,000-1,700 LB

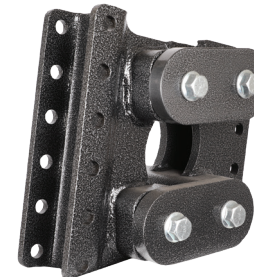


Package GH-10001 shown.

MODEL NO.	PRICE
GH-10001	\$739.99

Includes 6 Grade 8 Mounting Bolts

- TOWING: 21,000 LB.
- TONGUE WEIGHT: 2,400 LB.
- OPTIMAL TONGUE WEIGHT: 1,500-2,400 LB



Package GH-10002 shown.

MODEL NO.	PRICE
GH-10002	\$759.99

Includes 6 Grade 8 Mounting Bolts

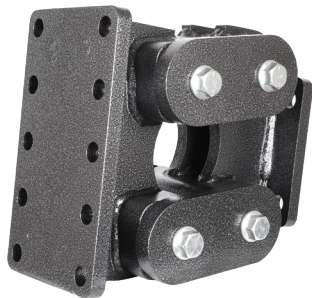
PATENTED FLAT MOUNT TORSION COUPLER 10000 SERIES



- TOWING: 21,000 LB.
- TONGUE WEIGHT: 2,400 LB.
- OPTIMAL TONGUE WEIGHT: 1,500-2,400LB

- TOWING: 30,000 LB.
- TONGUE WEIGHT: 4,000 LB.
- OPTIMAL TONGUE WEIGHT: 2,500-4,000LB

NEW



Package GH-10052 shown.

MODEL NO.	PRICE
GH-10052	\$759.99

NEW



Package GH-10053 shown.

MODEL NO.	PRICE
GH-10053	\$779.99

PATENTED FIFTH WHEEL KING PIN 8000 SERIES



EXECUTIVE

TORSION FLEX

• TOWING: 18,000 LB.

• TOWING: 30,000 LB.

NEW



Package GH-8030 shown.

NEW



Package GH-8050 shown.

MODEL NO.	OPTIMAL PIN WEIGHT	PRICE
GH-8030	1,000 - 2,500 LB.	\$1,299.99
GH-8040	1,500 - 3,500 LB.	\$1,399.99

MODEL NO.	OPTIMAL PIN WEIGHT	PRICE
GH-8050	2,000 - 4,500 LB.	\$1,499.99
GH-8060	2,500 - 5,500 LB.	\$1,599.99

PATENTED FIFTH TO GOOSE 8000 SERIES



EASILY CONVERT YOUR FIFTH-WHEEL PIN BOX TO A GOOSENECK CONNECTION

EXECUTIVE

TORSION FLEX

• TOWING: 18,000 LB.

• TOWING: 30,000 LB.

NEW



Package GH-8035 shown.

MODEL NO.	OPTIMAL PIN WEIGHT	PRICE
GH-8035	1,000 - 2,500 LB.	\$1,299.99
GH-8045	1,500 - 3,500 LB.	\$1,399.99

NEW



Package GH-8055 shown.

MODEL NO.	OPTIMAL PIN WEIGHT	PRICE
GH-8055	2,000 - 4,500 LB.	\$1,499.99
GH-8065	2,500 - 5,500 LB.	\$1,599.99



ALUMINUM RAMPS

HEAVY DUTY RAMPS FOR EVERYDAY USE

MODEL NO.	LENGTH	WIDTH	PACKAGE INCLUDES	PRICE
GH-R72	6'	14"	Two 14" x 72" ramps - 6,000 lb. total capacity	\$419.99
GH-R84	7'	14"	Two 14" x 84" ramps - 6,000 lb. total capacity	\$449.99
GH-R96	8'	15"	Two 15" x 96" ramps - 10,000 lb. total capacity	\$729.99
GH-R120	10'	15"	Two 15" x 120" ramps - 10,000 lb. total capacity	\$829.99
GH-R144	12'	15"	Two 15" x 144" ramps - 8,000 lb. total capacity	\$979.99
GH-R168	14'	15"	Two 15" x 168" ramps - 8,000 lb. total capacity	\$1,049.99



STABILITY

STABILIZER KITS

MODEL NO.

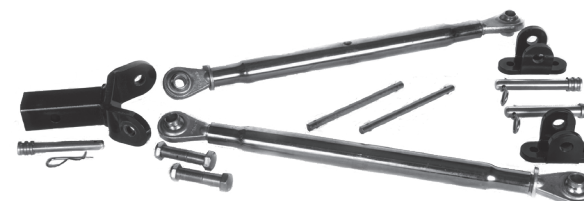
- GH-0100**
- GH-0101**
- GH-0100-1**

PACKAGE INCLUDES

- One set of 2" stabilizer bars and mounting hardware.
- One set of 2½" stabilizer bars and mounting hardware.
- 2" Hitch Bracket Only

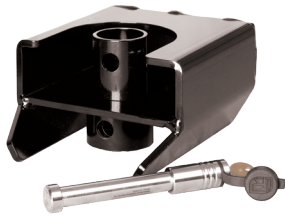
PRICE

- \$199.99**
- \$219.99**
- \$19.99**



WEIGHT DISTRIBUTION & LOCKS

GOOSENECK COUPLER LOCK DESIGNED FOR GOOSENECK COUPLERS



Package GH-7111 shown.

MODEL NO.	PACKAGE INCLUDES	PRICE
GH-7111	Lock Assembly & 5/8" Locking Pin. Designed for Auto Latch Gooseneck Couplers	\$239.99



Package GH-8111 shown.

MODEL NO.	PACKAGE INCLUDES	PRICE
GH-8111	Lock Assembly & 5/8" Locking Pin. Designed for Pin Latch Gooseneck Couplers	\$239.99

WEIGHT DISTRIBUTION SHANK



Package GH-0352 shown.

MODEL NO.	PACKAGE INCLUDES	PRICE
GH-0352	2" Weight Distribution Shank (10-16K)	\$99.99
GH-0353	2½" Weight Distribution Shank (21K)	\$119.99
GH-0354	2½" Weight Distribution Shank (32K)	\$119.99

SWAY CONTROL HEAD



MODEL NO.	PACKAGE INCLUDES	PRICE
GH-601	Add-on Sway Control Arm	\$79.99
GH-300-1	2" Sway Control Head Only	\$89.99
GH-600-1	2½" Sway Control Head Only	\$99.99



HITCH ACCESSORIES

HITCH STEPS



GH-035

Serrated "no-slip" step up. Lightweight high-strength steel. High-gloss black powder-coat finish. Compatible with all 2" receiver hitches. Designed to step up on front or back sides of all 2" GEN-Y style hitch drops. Light weight step rated at 300lbs.

\$89.99



GH-030

Serrated "no-slip" step up. Heavy-duty high-strength steel. High-gloss black powder-coat finish. Compatible with all 2" receiver hitches. Designed to step up on front or back sides of all 2" GEN-Y style hitch drops. Rated at 500lbs.

\$129.99



GH-060

Serrated "no-slip" step up. Heavy-duty high-strength steel. High-gloss black powder-coat finish. Compatible with all 2½" receiver hitches. Designed to step up on front or back sides of all 2½" GEN-Y style hitch drops. Rated at 500lbs.

\$149.99



GH-0069

The most heavy duty tow hook and hitch step combo on the market. Powder coated finish with durable epoxy coating. This hook/hitch step is made of solid steel rated to 50,000 lbs. Designed to be used vertically and horizontally. Compatible with all 2" or 2½" receiver hitches.

\$239.99

STAND-ALONE VERSA-BALL MOUNTS

COMPATIBLE WITH ALL TRUCK HITCHES



GH-034

Versa-Ball for 2" shank. 1500 lb. tongue weight. 10,000 lb. towing. 12" overall length. 2 $\frac{5}{16}$ ", 2" and removable 1 $\frac{7}{8}$ ". Compatible with all 2" truck hitches.

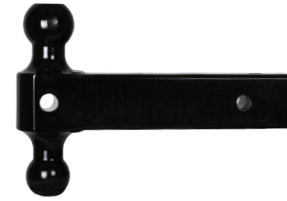
\$79.99



GH-054

Versa-Ball for 2" shank. 2000 lb. tongue weight. 16,000 lb. towing. 12" overall length. 2 $\frac{5}{16}$ ", 2" and removable 1 $\frac{7}{8}$ ". Compatible with all 2" truck hitches.

\$99.99



GH-064

Versa-Ball for 2 $\frac{1}{2}$ " shank. 3000 lb. tongue weight. 21,000 lb. towing. 12" overall length. 2 $\frac{5}{16}$ ", 2" and removable 1 $\frac{7}{8}$ ". Compatible with all 2 $\frac{1}{2}$ " truck hitches.

\$129.99

REPLACEMENT BALL MOUNTS

REPLACE YOUR GEN-Y BALL MOUNTS WITH OEM PARTS



NEW

GH-031

Replacement Versa-Ball for 2" GEN-Y hitches. 1500 lb. tongue weight. 10,000 lb. towing. Due to shank length, this part is not compatible with most truck hitches.

\$69.99



NEW

GH-051

Replacement Versa-Ball, with Pintle Saddle, for 2" GEN-Y hitches. 2000 lb. tongue weight. 16,000 lb. towing. Due to shank length, this part is not compatible with most truck hitches.

\$89.99



NEW

GH-061

Replacement Versa-Ball, with Pintle Saddle, for 2 $\frac{1}{2}$ " GEN-Y hitches. 3000 lb. tongue weight. 21,000 lb. towing. Due to shank length, this part is not compatible with most truck hitches.

\$109.99



GH-0161

Replacement Versa-Ball, with Pintle Saddle, for 2 $\frac{1}{2}$ " or 3" GEN-Y hitches. 3500 lb. tongue weight. 32,000 lb. towing. Due to shank length, this part is not compatible with most truck hitches.

\$119.99



GH-090

Bolt-on 1 $\frac{7}{8}$ " ball. 3500 lb. tow rating. $\frac{3}{4}$ " x 4" bolt, compatible with 2" and 2 1/2" shank Versa-Balls.

\$17.99

SINGLE BALL MOUNTS

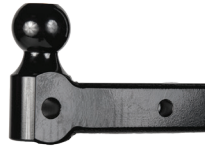
REPLACE YOUR GEN-Y BALL MOUNTS WITH OEM PARTS



GH-055

Replacement 2" Ball Mount for 2" GEN-Y hitches. 1500 lb. tongue weight. 10,000 lb. towing. Due to shank length, this part is not compatible with most truck hitches.

\$84.99



GH-056

Replacement 2 5/16" Ball Mount for 2" GEN-Y hitches. 2000 lb. tongue weight. 16,000 lb. towing. Due to shank length, this part is not compatible with most truck hitches.

\$84.99



GH-075

Replacement 2" Ball Mount for 2 1/2" GEN-Y hitches. 3000 lb. tongue weight. 12,000 lb. towing. Due to shank length, this part is not compatible with most truck hitches.

\$109.99



GH-076

Replacement 2 5/16" Ball Mount for 2 1/2" or 3" GEN-Y hitches. 3500 lb. tongue weight. 21,000 lb. towing. Due to shank length, this part is not compatible with most truck hitches.

\$109.99

PINTLE LOCKS

REPLACEMENT OEM PINTLE LOCKS



GH-032

Replacement pintle lock. Works with 10K or 16K 2" GEN-Y hitch systems.

\$39.99



GH-062

Replacement pintle lock. Works with 21K 2 1/2" GEN-Y hitch systems.

\$49.99



GH-0162

Replacement pintle lock. Works with all 32K 2 1/2" or 3" GEN-Y hitch systems.

\$59.99

HITCH ACCESSORIES

REDUCER SLEEVES/WELD-ON RECEIVER TUBES



GH-007

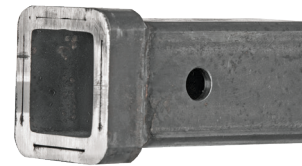
2½" to 2" reducer sleeve.
5½" overall length.
Black powder coat finish.

\$19.99

GH-008

3" to 2½" reducer sleeve.
5½" overall length.
Black powder coat finish.

\$24.99



GH-002

2" raw receiver tube - 5½" length

\$19.99

GH-003

2" raw receiver tube - 12" length

\$29.99

GH-004

2½" raw receiver tube - 5½" length

\$24.99

GH-0010

2½" raw receiver tube - 12" length

\$39.99

SPECIALTY ATTACHMENTS

PINTLE MOUNTING PLATES/CLEVIS



GH-038

Pintle mounting plate.
2" shank. Compatible
with GEN-Y hitch. Will
not comply with normal
truck hitches.

\$69.99



GH-068

Pintle mounting plate.
2½" shank. Compatible
with GEN-Y hitch. Will
not comply with normal
truck hitches.

\$89.99



GH-093

¾" x 6" 10,000 lb.
clevis. Fits all
Versa-ball mounts.

\$24.99

MISCELLANEOUS

RAPID LINKS/REPLACEMENT SET SCREWS/LOCKING TWIST PINS



5/8" Rapid Links
Safety chain extenders
5/8" rapid links. 12,000
lb. capacity.

\$14.99



GH-011
10 pk twist hair clips
for all GEN-Y pins.

\$6.99



GH-012 NEW
10 pk replacement
anti-rattle set screw.

\$6.99

SPECIALTY ATTACHMENTS

ANTI-SLACK/HITCH TIGHTENERS



GH-036
2" Pintle ware plate. **\$19.99**

GH-065
2½" Pintle ware plate. **\$24.99**



GH-013
1¼" hitch tightener. Compatible with most 1¼" hitches and attachments. **\$19.99**

GH-033
2" hitch tightener. Compatible with most 2" hitches and attachments. **\$24.99**

GH-063
2½" hitch tightener. Compatible with most 2½" hitches and attachments. **\$34.99**

GH-073
3" hitch tightener. Compatible with most 3" hitches and attachments. **\$39.99**

HITCH PINS

REPLACEMENT HITCH PINS



GH-096 NEW

5/8" stainless steel hitch pin. 3 1/2" usable length, compatible with all class IV hitches. Includes twist hair clip. **\$9.99**

GH-099 NEW

5/8" stainless steel hitch pin. 4" usable length, compatible with all class IV hitches. Includes twist hair clip. **\$9.99**

GH-097 NEW

3/4" stainless steel hitch pin. 4" usable length, compatible with all class IV and V hitches. Includes twist hair clip. **\$9.99**

GH-098 NEW

3/4" stainless steel hitch pin. 5" usable length, compatible with all GEN-Y gooseneck couplers. Includes twist hair clip. **\$11.99**

LOCKING PINS

INFINITE RULE SECURITY HITCH LOCKS/BOLT LOCKS



GH-5/8 LOCK

5/8" by 3 7/8" XXL locking hitch pin (2 1/2" & 3" Receiver). **\$39.99**

GH-3/4 LOCK

3/4" by 3 5/8" locking hitch pin for GEN-Y 32K hitch. **\$39.99**



BOLT XL PIN

5/8" extended pin. 3 1/2" usable length, compatible with all BOLT locks. Does not include BOLT lock. **\$13.99**

BOLT 3/4" PIN

3/4" extended pin. 3 1/2" usable length, compatible with all BOLT locks. Does not include BOLT lock. **\$15.99**





PHOTO CREDITS: GEAR ALLOY WHEELS

BOLT LOCKS LOCKING PINS

MODEL NO.	TRUCK	YEAR	PRICE
7018437	Silverado & CK Series	1995-2006	\$36.99
7018437	Sierra & CK Series	1995-2006	
7018437	Sierra Classic (Canada)	2007-2013	
7018437	S10 Blazer & Pickup	1995-2005	

MODEL NO.	TRUCK	YEAR	PRICE
7018438	Silverado	2007-2013	\$36.99
7018438	Silverado HD	2007-2014	
7018438	Sierra	2007-2013	
7018438	Sierra HD	2007-2014	

MODEL NO.	TRUCK	YEAR	PRICE
7023619	Canyon	2015-2017	\$36.99
7023619	Colorado	2015-2017	
7023619	Silverado	2014-2017	
7023619	Silverado HD	2015-2017	
7023619	Sierra	2014-2017	
7023619	Sierra HD	2015-2017	

MODEL NO.	TRUCK	YEAR	PRICE
Nissan 104	Titan	2004-2017	\$36.99
Nissan 104	Frontier	1998-2017	

MODEL NO.	TRUCK	YEAR	PRICE
7018439	F-150	1996-2014	\$36.99
7018439	F-Series Super Duty	1996-2016	
7018439	Explorer Sport Trac	2001-2011	
7018439	Ranger	1995-2012	
7018439	Blackwood	2002-2002	
7018439	Mazda Pickup	2001-2009	

MODEL	TRUCK	YEAR	PRICE
7023622	F-150	2015-2017	\$36.99
7023622	F-Series Super Duty	2017 +	
7023622	Transit Connect	2014-2017	

MODEL NO.	TRUCK	YEAR	PRICE
7018440	Dakota	1990-2012	\$36.99
7018440	Ram Pickup, Chassis	1990-2017	
7018440	Freightliner	1997-2017	
7018440	International	2006-2017	

MODEL NO.	TRUCK	YEAR	PRICE
7023621	Tundra	2000-2017	\$36.99
7023621	Tacoma (All)	1995-2016	
7023621	Tacoma (Only SR/SR5)	2017	

APPAREL

SHIRTS



\$14.99 SEE WWW.GENYHITCH.COM FOR AVAILABLE SIZES

APPAREL

HATS

NEW



\$14.99

GLOVES

NEW



\$15.99

BUMPER STICKERS



\$9.99

BANNER



\$39.99



PROUDLY
MADE IN AMERICA

1952 W. Market St. | Nappanee | IN | 46550 | USA
(574) 218-6363 | www.genyhitch.com