



SALES GUIDE

Weight Distributing Hitches • Tow Bars • Baseplates • Brakes • Accessories

DUKES A&W ENTERPRISES, 1000 Industrial Blvd., Louisville, KY 40219 (800) 344-8243 (502) 961-0903

Contents

Company History	4
Weight Distributing Hitches	5
Hitch Accessories	6
Recreational Tow Bars	7
Baseplates, Fuse Bypass Switches, Rise/Drops	9
Dinghy Tow Brake/Patriot	10
Flat Towing Accessories	11
Wiring Kits & Cables	12
Mad-Ramps	13
Premiere Partners	14
Displays	15
Blue Ox Sales Team	16

Innovation is Our Business

Blue Ox exists to make towing easier, safer, and more convenient. I believe in our company's and our industry's capacity to transform and improve people's lives with innovative products helping them experience the wonder of travel and the great outdoors.

We are a fourth-generation family-owned company started in 1925 by my great-grandfather on the family farm, just outside of Pender, Nebraska, the current site of our manufacturing plant. My great-grandfather began this company by solving a problem, keeping pests off of livestock, with the invention of automatic cattle and hog oilers, eventually introducing grain roller mills which we still manufacture alongside Blue Ox towing products in our Pender plant.

In the 1980s, my father began to diversify into towing products for motorhomes and trailers. Beginning with the KarTote trailer allowing our customers to tow their cars behind their motorhomes. In the 1990s we started manufacturing tow bars for the recreational and commercial markets. Blue Ox permanently changed recreational towing with the invention of the receiver mount tow bar in 1994, and the removable tab baseplate in 1997. We continue to innovate with the introduction of non-binding latches and recreational tow bars that tow up to 15,000 lbs.

As the new century began, Blue Ox moved into the design and manufacture of weight distributing hitches, introducing SwayPro™ in 2004. SwayPro is a unique premium hitch that distributes trailer weight, prevents sway before it starts with caster built into in the hitch head, and spring steel bars that augment the suspension of tow vehicle and the trailer.

This year, we have introduced another innovation in weight distribution with the launch of the TrackPro™ hitch. TrackPro provides a premium ride using caster in the hitch head to constantly push the trailer to the center of the tow vehicle, spring steel bars to augment the suspensions of the tow vehicle and trailer, and additional points of friction to manage sway.

We have also purchased Mad-Ramps, a receiver mounted ramp system that easily loads ATVs, UTVs and snowmobiles into the bed of a pickup or flatbed truck. Mad-Ramps are unique in that they fold up and store on the vehicle without having to fit traditional ramps in the truck bed along with your ATV or worry about using a trailer over uneven terrain. With Mad-Ramps a customer may travel anywhere a pickup can go.

As we continue to grow, we are dedicated to investing in our employees and our manufacturing plant. In order to keep up with demand, we have purchased a new BLM flat laser and a BLM tube laser to increase our production capacity. We continue to look for ways to improve our manufacturing processes and to deliver the premium products our shared customers deserve.

The best part of my day is getting to speak to our dealers. Without your input and support, Blue Ox would not be the company it is today. Thank you for being our customer and we look forward to continuing to providing your customers with products that enhance and add value to their lives.



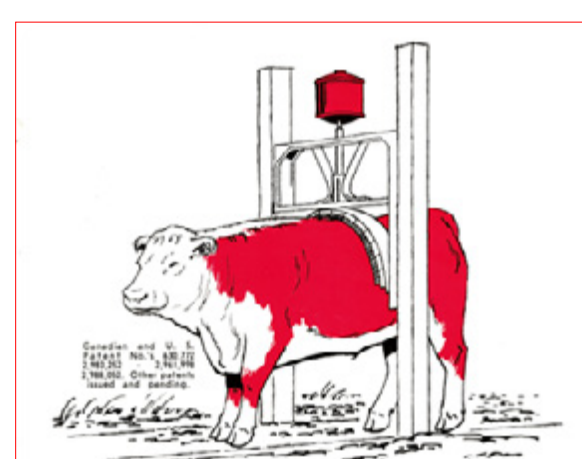
Mike Hesse

A handwritten signature in black ink that reads "Mike Hesse". The signature is written in a cursive, flowing style.

CEO/Chairman
Blue Ox, Automatic, Mad-Ramps

We started on a family farm. Our manufacturing plant is still there.

1925 Automatic



We Invented Oilers
... back in 1925

Not too long ago a hog had to be oiled by hand. In 1925, we gave you an Automatic Oiler and introduced a completely new way to do the job. There are other oilers today, but none as simple and efficient as the Automatic Oiler. It's the only one that will oil a hog or a cow in less than a minute. It's the only one that will oil a hog or a cow in less than a minute. It's the only one that will oil a hog or a cow in less than a minute.

AUTOMATIC OILERS

... with a 5-Year Guarantee

Automatic Equipment Mfg. Co., Pender, Nebraska

Invented Cattle and Hog Oilers

1947 Automatic



High-Moisture Roller Mill

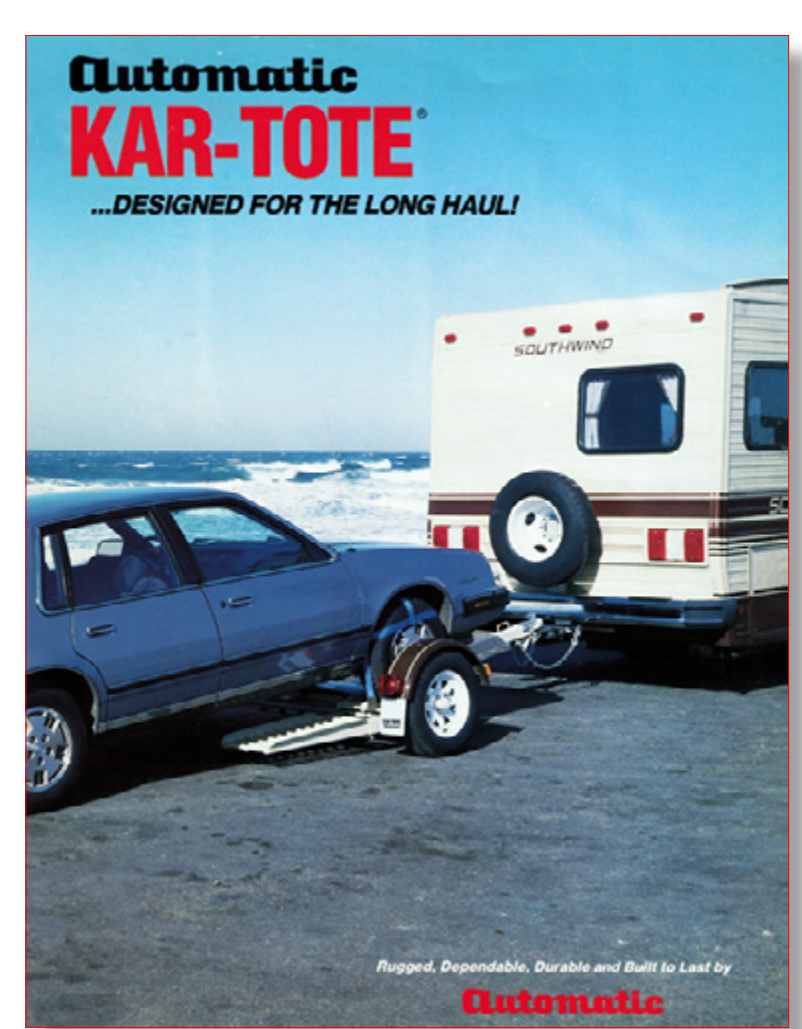
Get 20% More Feeding Value
...from high-moisture grain!

YOU CAN DOUBLE THE VALUE of your Moisture or other high-moisture grain by processing it with our Automatic High-Moisture Roller Mill. It's the only mill that will roll high-moisture grain into a fine, uniform meal that is easy to digest and absorb. It's the only mill that will roll high-moisture grain into a fine, uniform meal that is easy to digest and absorb.

AUTOMATIC Roller Mills
Automatic Equipment Mfg. Co., Pender, Neb.

Introduced Grain Roller Mills

1980 Automatic



Introduced KarTote Trailer

1991

We complete your system with peace of mind.



Purchased Blue Ox Towing

1994

Now the most advanced technology is easy to use.



Invented Receiver Mount Tow Bar

1997



Invented Removable Tab Baseplates

2004



Invented SwayPro WD Hitch Sway Prevention

2014



Introduced Avail Tow Bar with all-terrain latches

2020



Purchased Mad-Ramps ATV, UTV Loading Ramps

2020



Introduced TrackPro WD Hitch Sway Management

[Back to Contents Page](#)



A Weight Distributing Solution for Every Customer



TrackPro™

Sway Prevention & Sway Management

Distributes trailer tongue weight evenly.

Prevents sway by bad roads, wind or weather.

Caster with additional points of friction.

Backup without disconnecting.

Standard Shank		9-Hole Shank	
BXW0850	800 lbs.	BXW0851	800 lbs.
BXW1050	1000 lbs.	BXW1051	1000 lbs.
BXW1350	1300 lbs.	BXW1351	1300 lbs.

[Back to Contents Page](#)



SwayPro™

Sway Prevention & Soft Ride Technology

Distributes trailer tongue weight evenly.

Prevents sway by bad roads, wind or weather.

Prevents sway even in rain or snow.

No noises created by friction.

Backup without disconnecting.

Standard Shank		9-Hole Shank	
BXW0550	550lbs.	BXW0550-S	550lbs.
BXW0750	750lbs.	BXW0750-S	750lbs.
BXW1000	1000lbs.	BXW1000-S	1000lbs.
BXW1500	1500lbs.	BXW1500-S	1500lbs.
BXW2000	2000lbs.	BXW2000-S	2000lbs.



Round Bar

Weight Distribution

Distributes trailer tongue weight evenly.

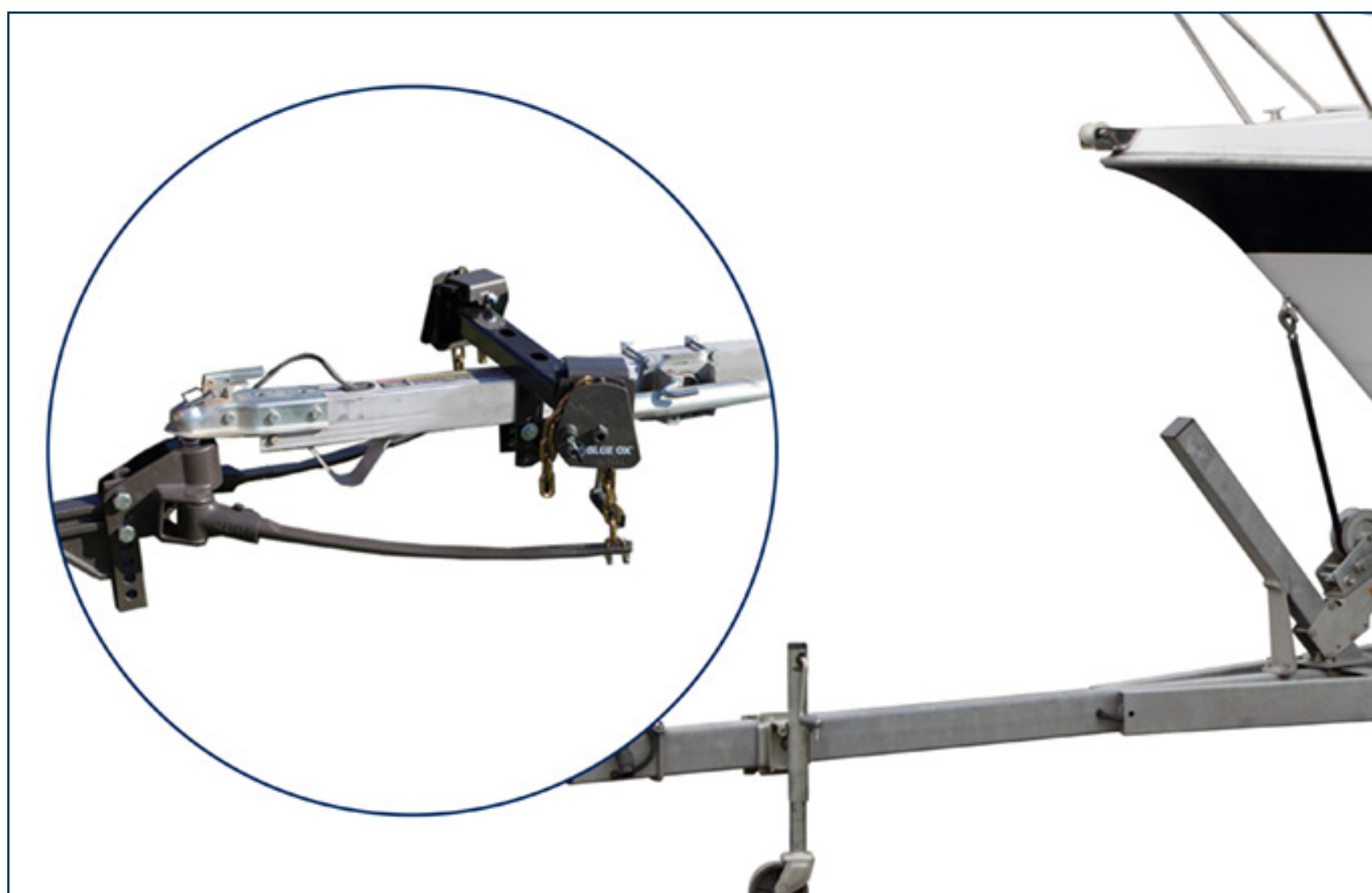
Add-on sway control available.

6-Hole Shank	
BXW0800	800lbs.
BXW1200	1200lbs.

Hitch Accessories

BXW4043 Pole Tongue Adapter

Boat Trailers
Portable Ice Fishing Houses



- 2000 lbs. Tongue weight capacity
- Fits tongue widths 2 3/4" - 4 1/2"
- Fits tongue heights 3"-6"
- Attach any over the frame style WD brackets
- Limited lifetime warranty

[Back to Contents Page](#)

SwayPro Hitch Shanks

BXW4000 7 Hole, Max TRW 20,000 lbs.
 BXW4002 9 Hole, Max TRW 15,000 lbs.
 BXW4022 11 Hole, Max TRW 15,000 lbs.
 BXW4028 9 Hole, 2-1/2" Rec. Max TRW 20,000 lbs.

SwayPro Spring Bars

BXW4015 350 lb
 BXW4005 550 lb
 BXW4006 750 lb
 BXW4007 1000 lb
 BXW4008 1500 lb

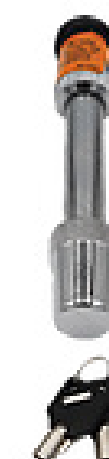
SwayPro Wrench

BXW4029



Hitch Locks

BXW8859 Receiver Lock 5/8"
 BXW88212 Receiver Lock 5/8" X 4



Trailer Coupler Lock
 BX88351 1-7/8" - 2-5/16"



Universal Kingpin Lock
 BX88360



Hitch Immobilizers

BX88224 2" Receiver
 BX88225 2-1/2" Receiver
 BX88312 2-1/2" to 2" Receiver

Eliminate jerking, excess movement and rattling between the receiver hitch and the ball mount, tow bar or drop or rise receiver.

Works on any tow bar or weight distributing hitch.



TrackPro Hitch Shanks

BXW4036 7 Hole, Max TRW 20,000 lbs.
 BXW4037 9 Hole, Max TRW 15,000 lbs.
 BXW4038 11 Hole, Max TRW 15,000 lbs.
 BXW4039 9 Hole, 2-1/2" Rec., Max TRW 20,000 lbs.

TrackPro Spring Bars

BXW4040 800 lb
 BXW4041 550 lb
 BXW4042 750 lb

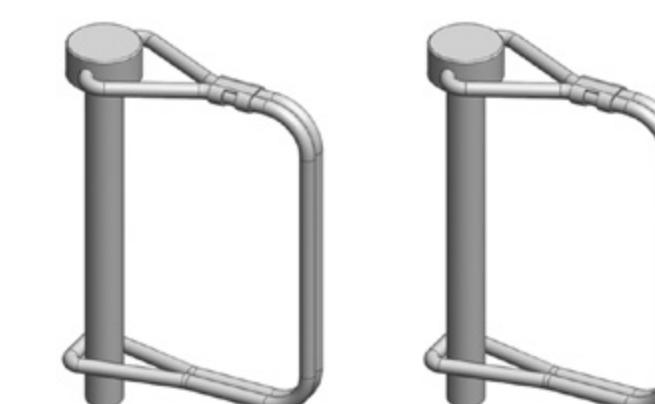
TrackPro Spring Bar Tool

BXW4043



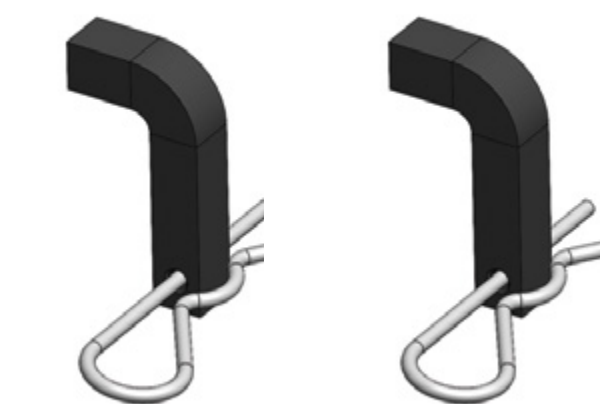
TrackPro Pin Kit

BXW4047



TrackPro L - Pin Kit

84-0432

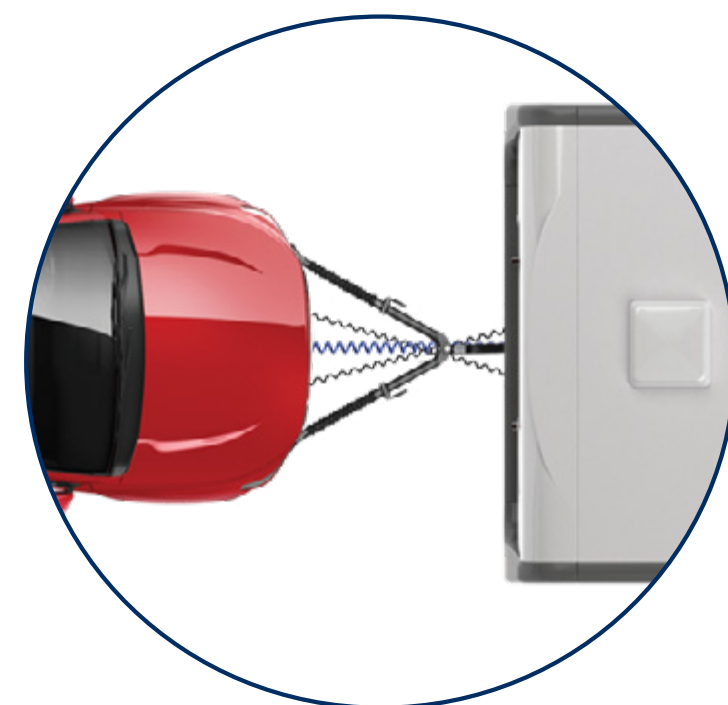




Blue Ox Tow Bars. Flat Towing Made Easy.



Premium powder coat accents modern coach design.



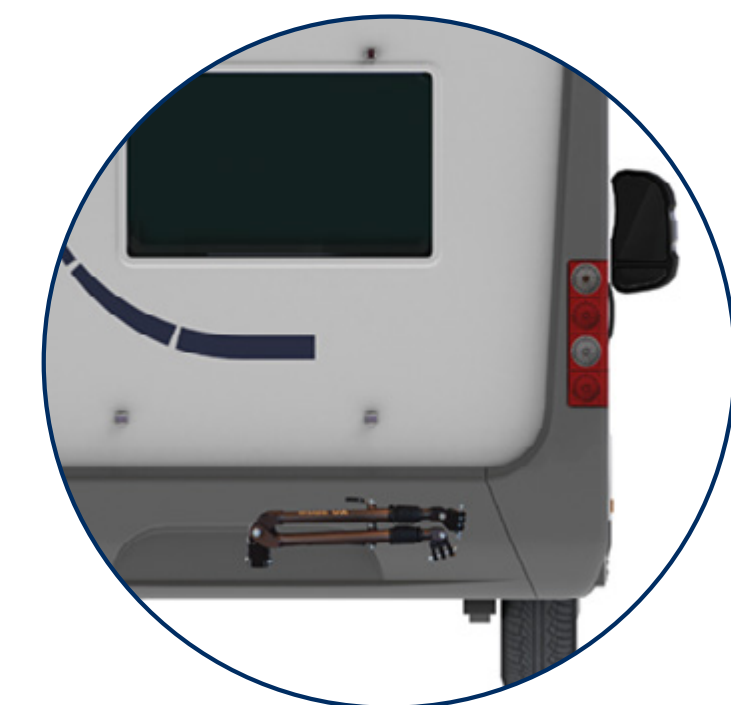
Apollo, Ascent, Avail: 2" longer legs for smoother towing and more room for turns.



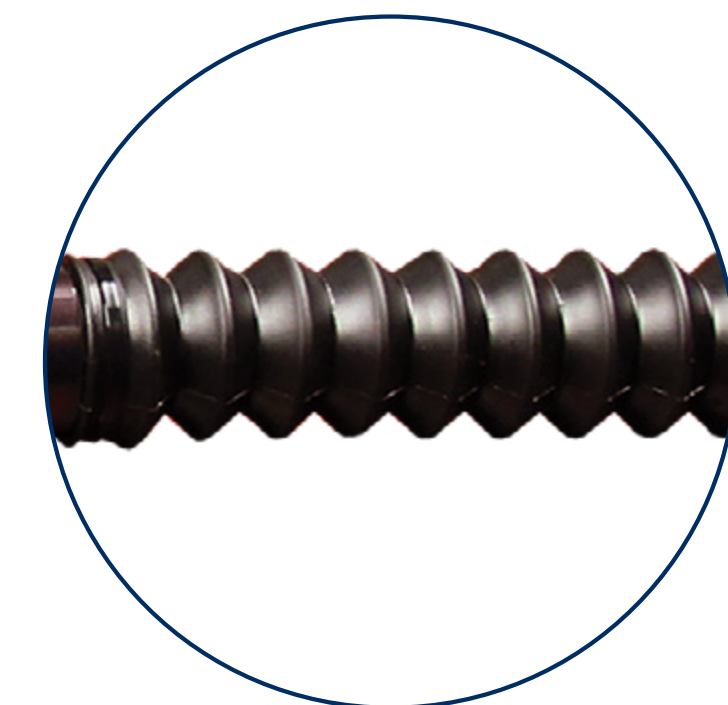
Tow Capacities from 6,500 lbs to 15,000 lbs.



Patented non-binding latches quickly disconnect, even in the most rugged terrain.



Folds up and stores in the motorhome's receiver hitch.



Rubber boots protect the legs from damage caused by road grime.

[Back to Contents Page](#)

Receiver Mount Tow Bars & Accessory Kits

Apollo™



BX7470
All steel construction.
15,000 lb towing capacity.

Ascent™



BX4370
Lightweight aluminum.
7,500 lb towing capacity.

Avail™



BX7420
All steel construction.
10,000 lb towing capacity.

Alpha 2™



BX7380
All steel construction.
6,500 lb towing capacity.



7 to 6 Apollo Accessory Kit

BX88363
7-6 wire electrical cable
Bulb and socket kit
2 Lock Kit
Receiver Lock Kit
Tow bar cover



7 to 6 Ascent/Avail Accessory Kit

BX88308
7-6 wire electrical cable
Bulb and socket kit
3 Lock Kit
4-Diode Kit
Tow bar cover



7 to 6 Accessory Kit

BX88231
7-6 wire electrical cable
Bulb and socket kit
3 Lock Kit
4-Diode Kit
Tow bar cover

[Back to Contents Page](#)

Blue Ox Removable Tab Baseplates Retain the OEM Look of the Towed Vehicle



Baseplate Tabs In



Baseplate Tabs Out



To install tab:
Insert and
twist to lock.

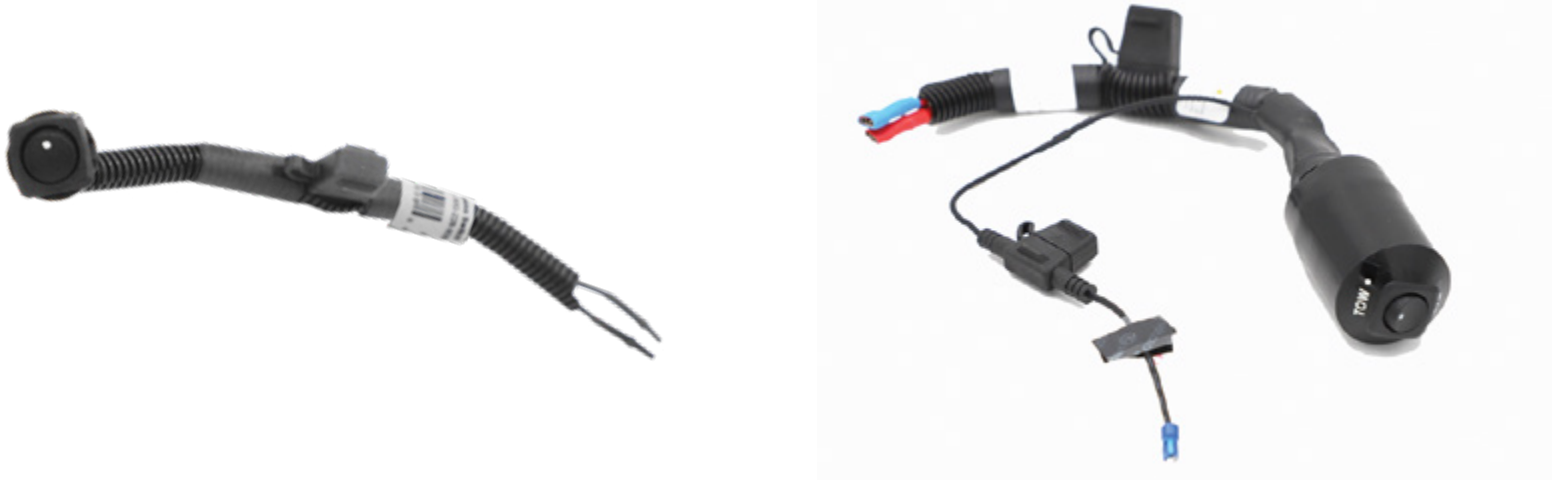


To remove tab:
Pull ring, twist,
and remove.



Fuse Bypass Switches

Flip a switch instead of removing fuses.



BX88271

BX88274

- BX88294 ATC/ATO, 2 Circuit Fuse Bypass Switch
- BX88274 High Current Fuse Bypass Switch
- BX88273 Two Mini Fuse Bypass Switch
- BX88272 Mini Fuse Bypass Switch, Long Lead
- BX88271 Mini Fuse Bypass Switch, Short Lead

Rise/Drop Receivers

Keep your tow bar level within 3"



- BX88128 2" Rise/Drop, 5,000 lbs., 7-3/4" long.
- BX88129 4" Rise/Drop, 5,000 lbs., 7-3/4" long.
- BX88131 8" Rise/Drop, 5,000 lbs., 11-1/2" long.
- BX88132 10" Rise/Drop, 5,000 lbs., 11-1/2" long.
- BX88235 3" Rise/Drop, 10,000 lbs., 10-3/8" long.

[Back to Contents Page](#)



Patriot 3 checks brake pressure to ensure proper setup.

Patriot™ 3

Dinghy Tow Brake

BRK2019



Fast Setup.

Attach the brake claw, plug in the power cord, push the setup button, go.



It's electric.

Electric, self-contained. Designed to make towing safe and easy.



No tanks.

No tank to drain, no pumps or hoses to connect.



In-cab controller.

Monitors the brake and allows manual input for braking response.



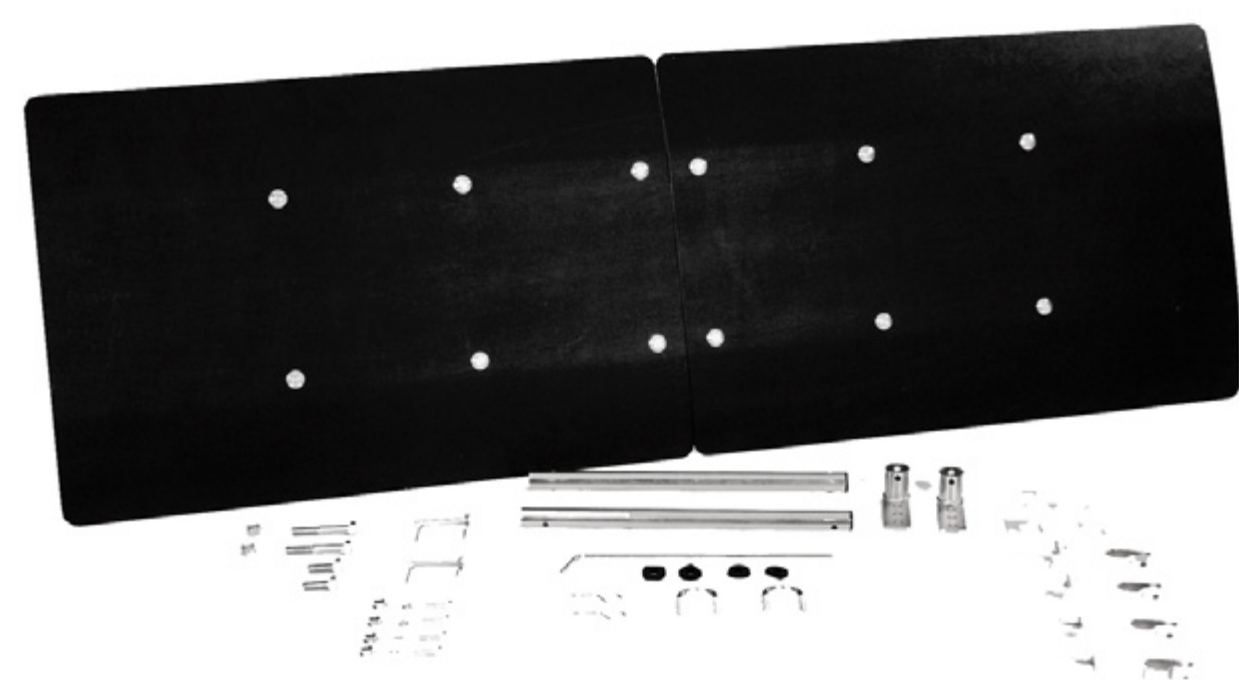
Works with hybrids.

If you have a hybrid vehicle, Patriot 3 will get you on the road.

[Back to Contents Page](#)

Flat Tow Accessories

BX8870 **KarGard Heavy Duty Deflector**



- Protects vehicle from road debris
- Easily folds for storage
- Aluminum mounting equipment
- Quick and easy installation
- All mounting hardware included

Off-Road Bumper Adapters

Designed for use with Blue Ox Tow Bars equipped with standard triple lugs.



BX88357 Off Road Adapter Kit
7/8" Pin.



BX88358 Off-road Adapter Kit
1" Pin.



Safety Cables

BX88196 7,500 lbs., 7 ft.

BX88197 10,000 lbs., 7 ft.



Hitch Immobilizers

BX88224 2" Receiver

BX88225 2-1/2" Receiver

BX88312 2-1/2" to 2" Receiver



Hitch Locks

BX8858 5/8" x 2" Rec. Class III-IV-V

BX8859 1/2" for Baseplate Class II

BX88359 1/2" x 3" Lock Class II Keyed alike

BX88212 5/8" x 4" for 2-1/2" Rec.

BX88101 3-Lock kit (1) 5/8" & (2) 1/2" for Baseplate 2" Rec.

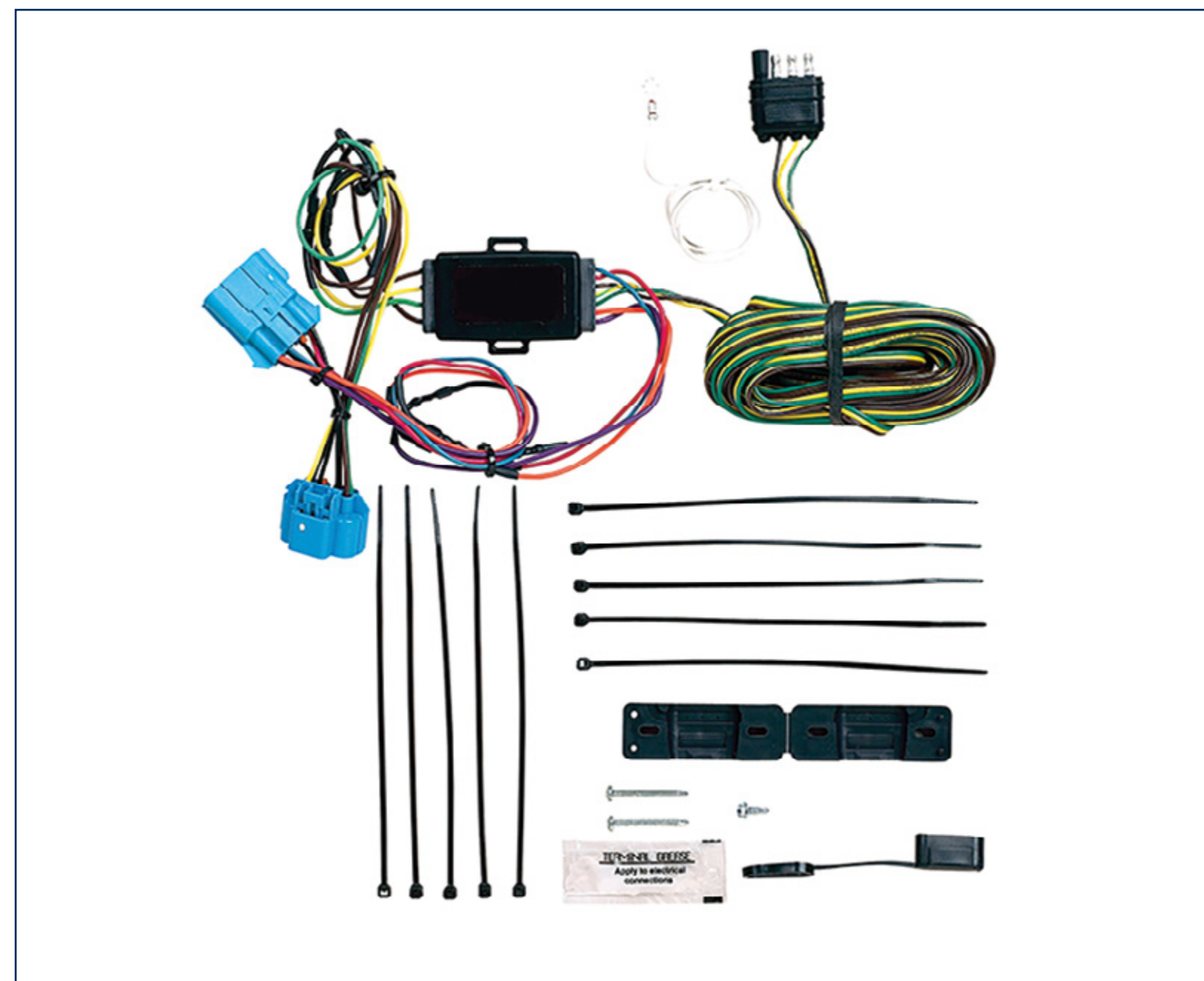
BX88177 4-Lock kit (2) 5/8" & (2) 1/2" for Baseplate 2" Rec.



[Back to Contents Page](#)

Wiring Kits & Cables

EZ Light Wiring Kits



Connect to the tow vehicle's electrical system in as little as 15 minutes.

Includes wiring for a towed vehicle's:

- Taillights
- Turn Signals
- Brake lights

Popular Fits:

BX88366 Ford F-150 2015-2019

BX88368 Jeep Wrangler JL/Patriot/
Gladiator 2018-2020

See application guide for correct vehicle fit.

Coiled Electrical Cables

Eliminates accidental disconnects. Molded design: less wear and tear, protects wiring in all weather. Cables expand from 1' to 7'. Trailer plug sockets included. Wire connectors encased in silicone.

BX8861 4 wire

BX8862 6 wire

BX88206 7 to 6 wire

BX88254 7 to 4 wire



5th Wheel Wiring Harness

Designed to mount in the bed of the truck using the truck's factory wiring, allowing for easy hookup of a 5th wheel trailer.

Includes: 6' wire harness, 7 pole trailer socket, cable ties, and screws

BX88356

- Easy-Grip Lid opens 180° for easier connections
- Internal seals for maximum weather proofing
- Reinforced 90° angle
- Exact OEM fit



Wiring Kits

BX8869 Bulb & Socket
Taillight Wiring Kit

The bulb & socket kit does not tap into the vehicle's existing wiring. Fits most vehicles with clearance in taillight.

Operated by the towing vehicle.



BX8848 Diode Wiring Kit

Connects RV's tail, brake, and turn signal lights to towed vehicle's light system. Includes 26' long, 4-wire harness; 3 diodes; and detailed instructions.

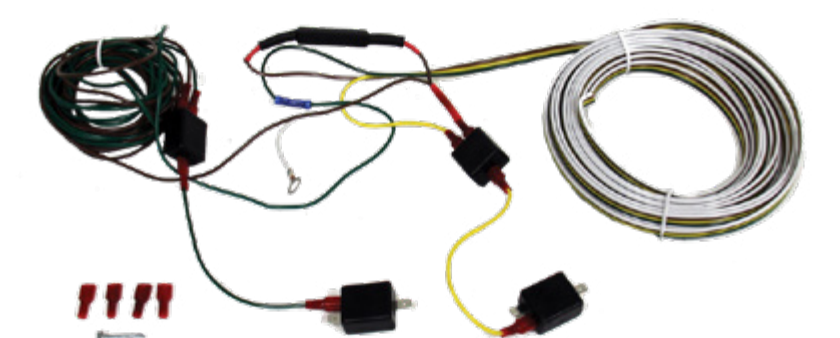
Diodes prevent electrical feedback.



BX88334 Diode Kit
with 50 OHM Resistor

Connects brake, taillights, and turn signals.

In-line resistor on the wiring harness for vehicles with LED brake and running lights on the same wire.



BX88267 Red LED
BX88269 Clear LED
Taillight Wiring Kits

LED bulb & socket kits are brighter and smaller, allowing for ease of installation in compact taillight housings.

Does not tap into the vehicle's wiring. Operated by the towing vehicle.



[Back to Contents Page](#)



Drive your ATV/UTV into the truck bed.



Mad-Ramps automatically flip up.



Tilt the ramps under the bumper guard, pull the locking lever to stow for towing.

MAD-RAMPS™

Leave the trailer and go.

- Easily reach places impossible to reach with a trailer
- Two ground-clearance settings for highway & off road
- Full LED lighting: Brake, turn, & marker lights
- Extra room for your gear in the truck bed
- DOT approved in all 50 states
- Connects and disconnects from your truck in 60 seconds

Ask your BX sales representative how you can get a 10% rebate when you sell Mad-Ramps.

[Back to Contents Page](#)